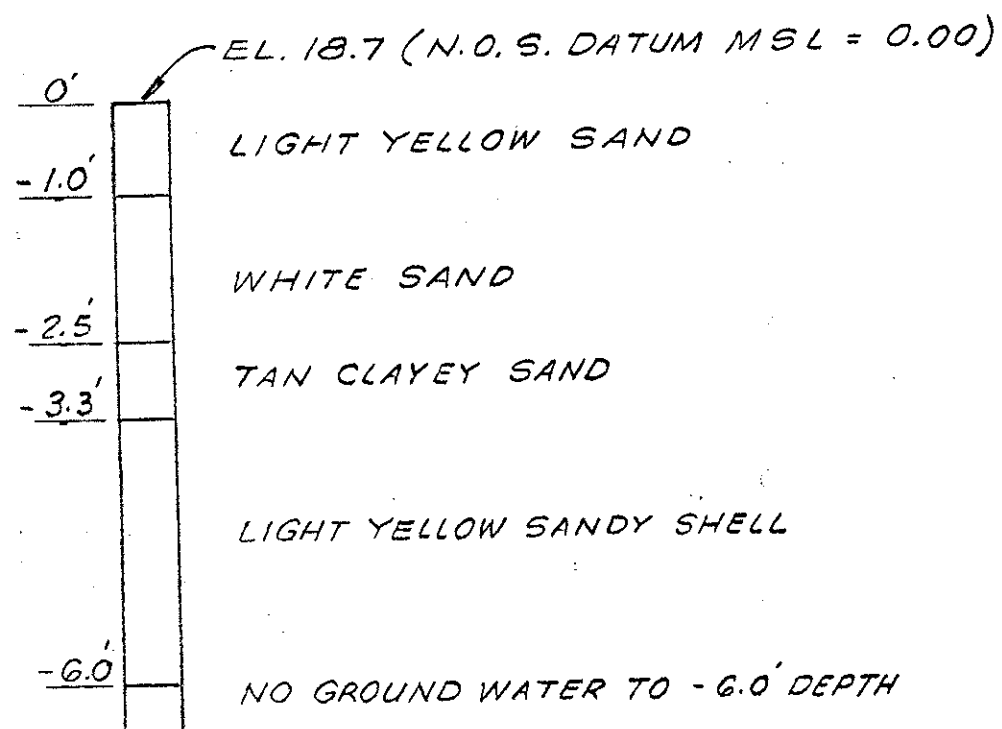
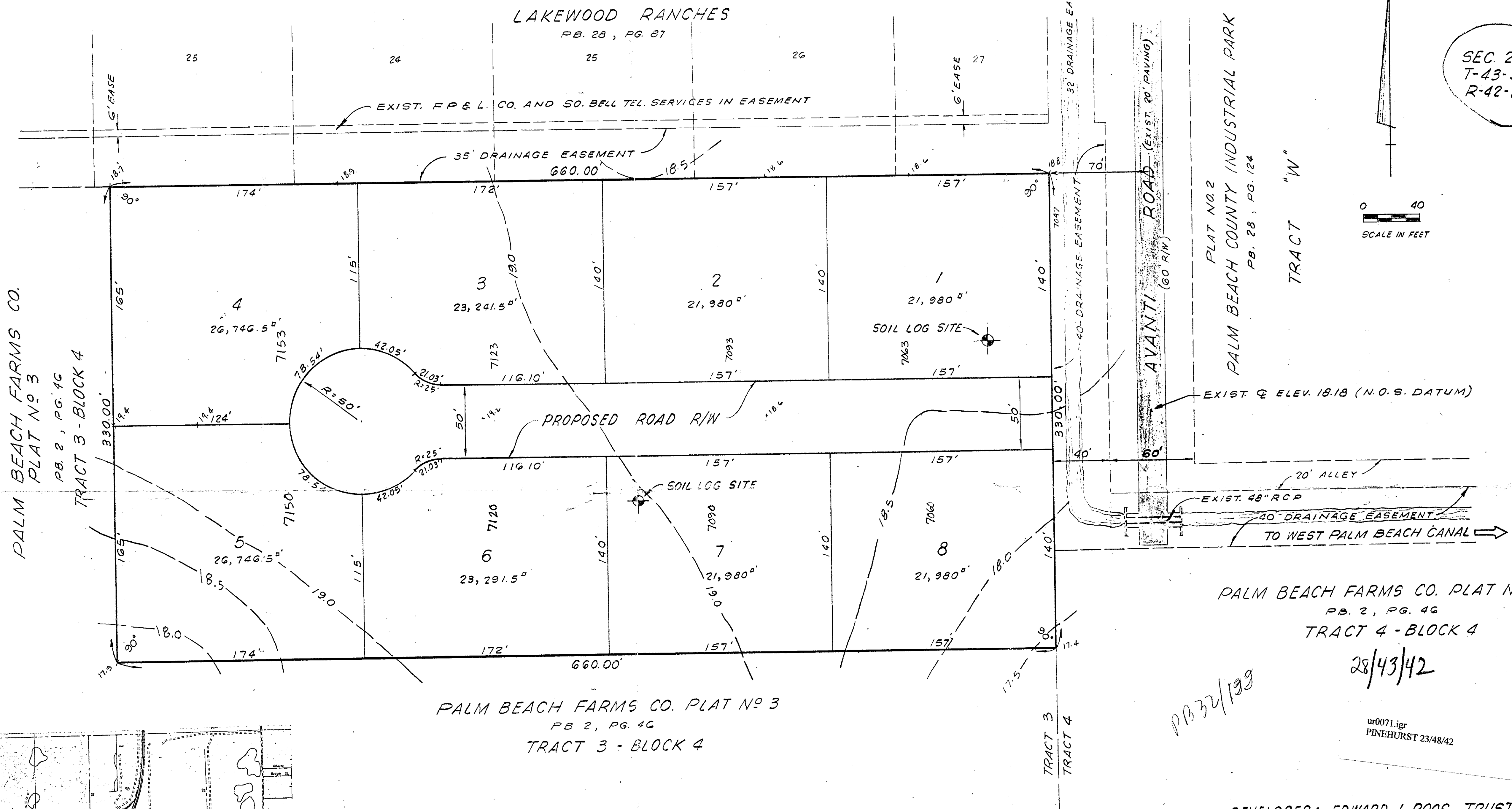
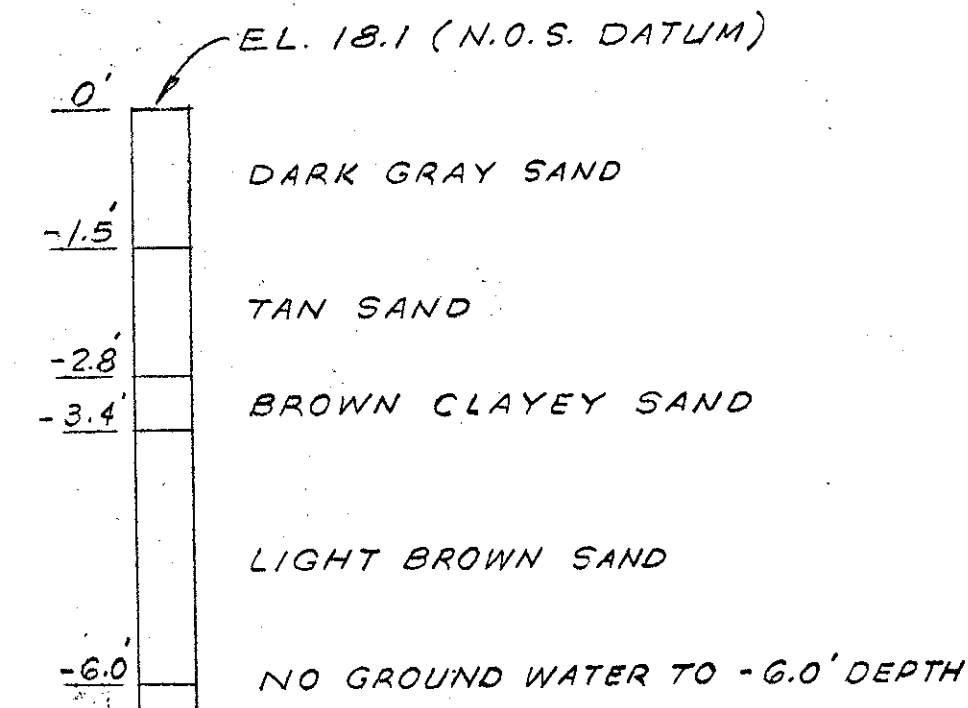


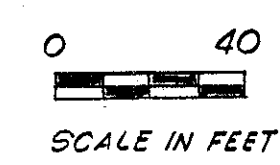
LOT 1 - SOIL LOG



LOT 7 - SOIL LOG



SEC. 28
T-43-S
R-42-E



PALM BEACH FARMS CO. PLAT NO. 3
PB. 2, PG. 46
TRACT 3 - BLOCK 4

PALM BEACH FARMS CO. PLAT NO. 3
PB. 2, PG. 46
TRACT 4 - BLOCK 4

28/43/42

PB 32/199

ur0071.igr
PINEHURST 23/48/42

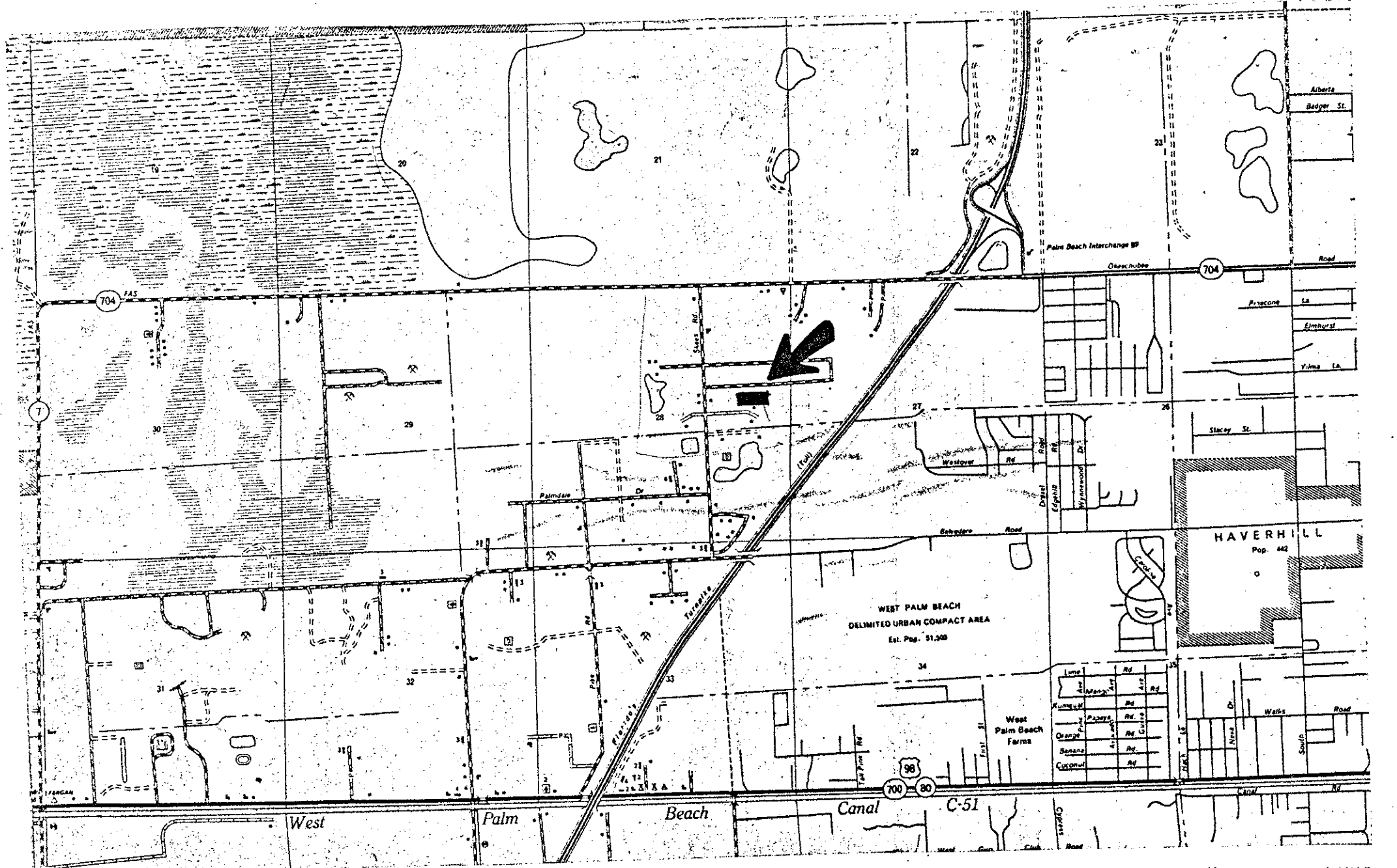
DEVELOPER: EDWARD J. ROOS, TRUSTEE
2930 OKEECHOBEE BLVD.
WEST PALM BEACH, FLA.
PH. 683-3113

ZONING CLASSIFICATION: RS

NOTE: ALL LOTS IN EXCESS OF 1/2 ACRE
FOR SINGLE FAMILY HOMESITES.
UTILITIES ARE AS SHOWN ON NORTH
SIDE OF PROPERTY AND HAVE BEEN
COORDINATED WITH UTILITY COMPANIES.

DESCRIPTION

ALL THAT TRACT OF LAND COMPRISING FIVE ACRES,
MORE OR LESS, BEING THE EASTERLY SIX HUNDRED AND
SIXTY FEET (660') OF THE NORTH HALF OF THE SOUTH
HALF OF TRACT THREE (3), BLOCK 4, PALM BEACH
FARMS PLAT NO. 3, PALM BEACH COUNTY, FLORIDA.



DATE	BY	DESCRIPTION	REVISION

FIELD: B. K.
DRAWN BY: J. B. C.
CHECKED BY: KCM
DATE: SEPT. 1976
JOB NO. 76-198

MOCK ROOS & SEARCY
Consulting Engineers
INCORPORATED

WEST PALM BEACH, FLORIDA

MASTER PLAN
OF
PINEHURST

SCALE: 1" = 40' DR. NO. 43-42-28-21 SHEET 1 OF 1